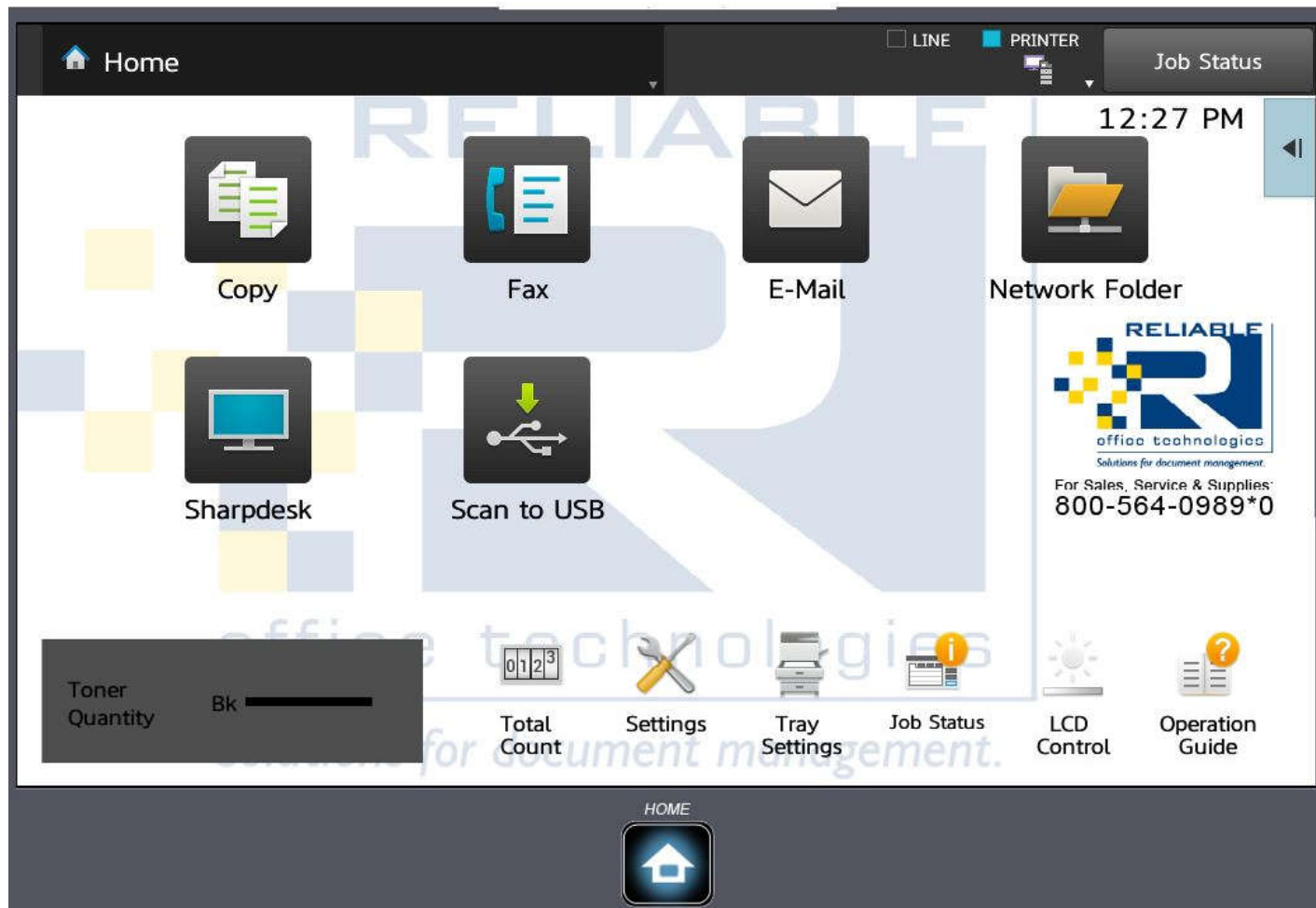
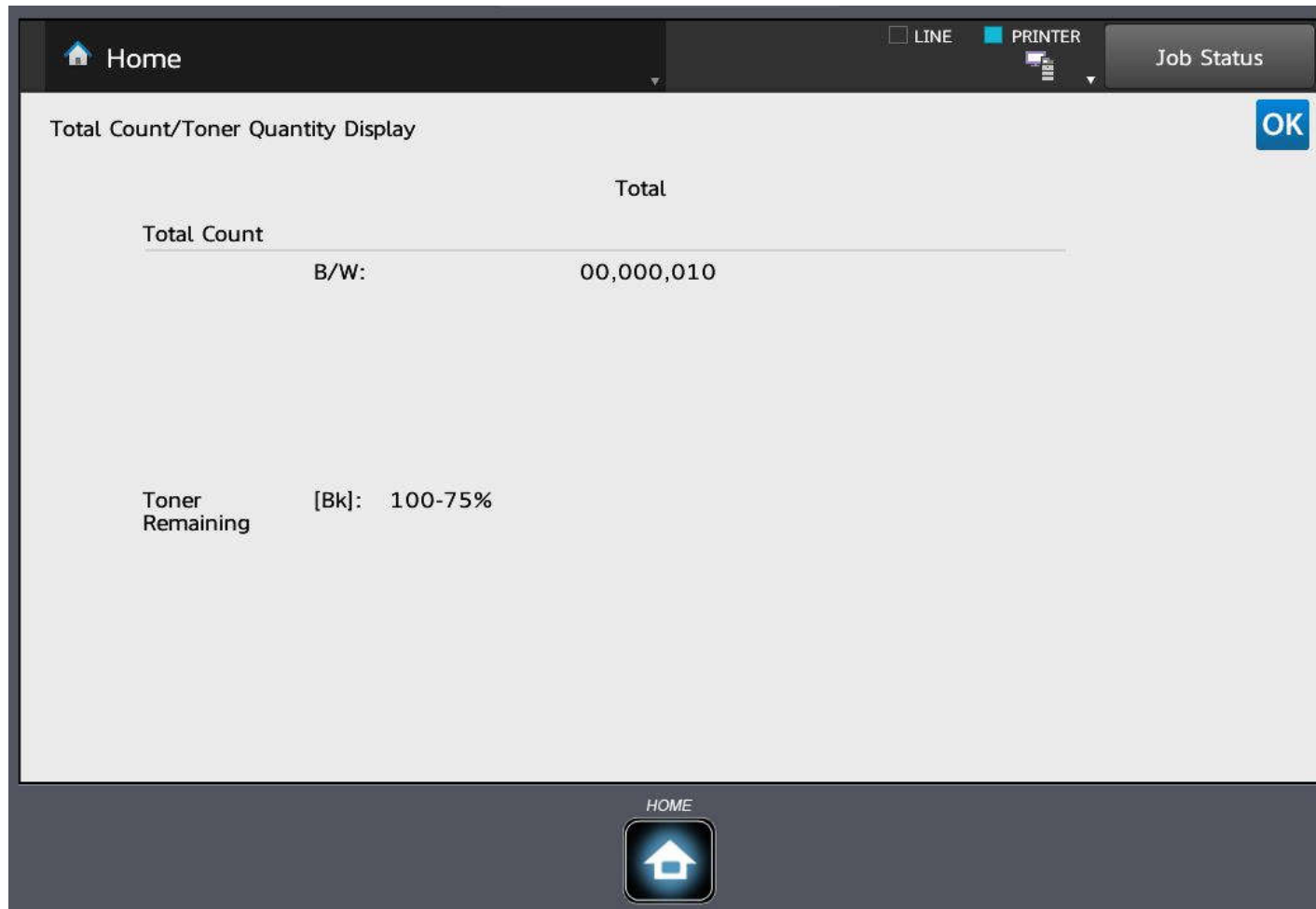


How to get a Meter Read on your Sharp Copier

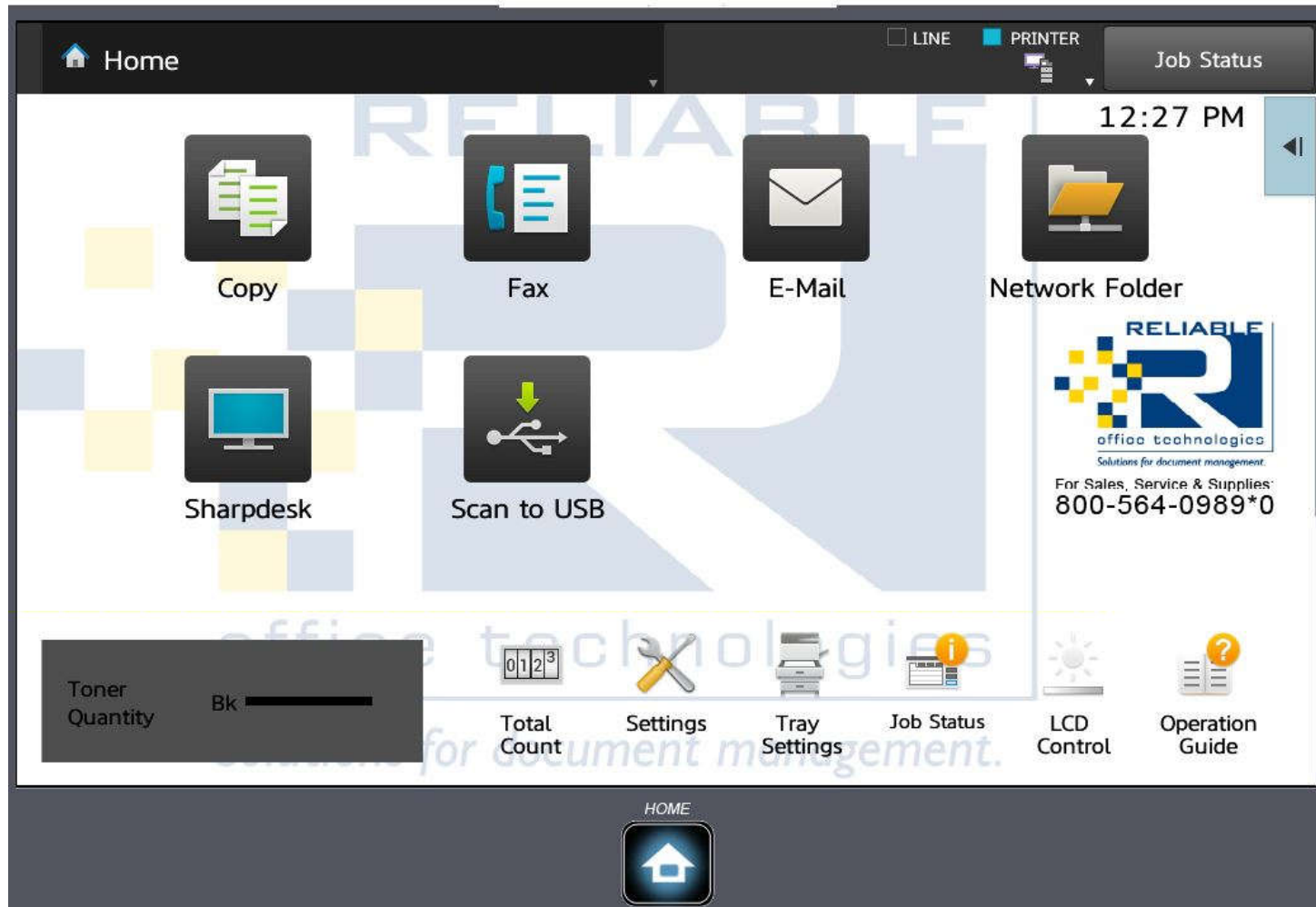




The easiest way to find the meter is to press “Total Count”.



The "Total Count" section shows the counts for both black and white and color. The "Toner Remaining" Section shows how much toner is remaining for each color before supplies need to be replaced. When you see 0-25% remaining. Please call ROTC and order a new toner for that color.



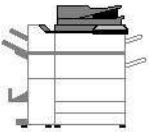
You can also print out a report with the meter on it to keep for your records or to send to ROTC. Press the “Settings” button on the touch screen

SHARP Operation Manual Download [Sitemap](#)
MX-M6570 American English

Status | **Address Book** | **Document Operations** | **User Control** | **System Settings** | **Shortcut**

Machine Identification

- Total Count
- Device Status
- Network Status
- Firmware Version
- Power Reset
- Data List
 - List for User
 - List for Administrator



Unit Serial Number: 8500535500
 Name: [MX-M6570](#)
 Model Name: MX-M6570
 Machine Location: [Not Set](#)
 Current Status: [Online](#)
 Memo: [Not Set](#)

Supply Status

Supply Information	Status
Black Toner	Over 50% <div style="width: 50%; background-color: black; height: 10px; display: inline-block;"></div>

Paper Input Tray Status

Tray	Status	Paper Size	Paper Type
Tray 1	0%	Letter(8 1/2x11)	Plain Paper 1
Tray 2	9%	Letter(8 1/2x11)	Plain Paper 1
Tray 3	0%	Letter(8 1/2x11)	Plain Paper 1
Tray 4	0%	Executive 8 1/2x11 (10/11)	

In the “Settings” screen, press the “List for User” link under “Data List on the left side of the screen.

SHARP
MX-M6570

Operation Manual Download Sitemap

日本語

Login

Status Address Book Document Operations User Control System Settings Shortcut

Machine Identification
Total Count
Device Status
Network Status
Firmware Version
Power Reset
Data List
List for User
List for Administrator

List for User

Machine Status List **Print(C)**

Printer Test Page

- PCL Symbol Set List
- PCL Internal Font List
- PS Font List
- NIC Page

Select All(S) **Clear Checked(K)**

Print(O)

Sending Address List

- Individual List
- Group List

Select All(R) **Clear Checked(K)**

^ Top of Page

In this screen, look for “Machine Status List” and press the “Print” button. A report will print out of the machine.

HARDWARE STATUS			
Machine Information		Color Calibration	
Resolution:	600dpi	Last Method:	Auto Color Calibration
Language:	American English	Date & Time:	09/15/2014 11:28:39 PM
Copier Memory		Firmware Version	
Base Memory:	2048MB	ICU(MAIN):	06.01.G2
Optional Memory:	0MB	ICU(BOOT):	01.00.G2
Total Memory:	2048MB	ICU(SUB):	01.04.G2
Printer Memory		PCL(MAIN):	06.00.G2
Base Memory:	1024MB	PCU:	04.02.G2
Optional Memory:	0MB	SCU:	01.00.G2
Total Memory:	1024MB	Installed Device	
HDD		Paper Feeding Options:	Stand/500 Sheet Paper Drawer
	320GB	Paper Exit Options:	Not Installed
Total Count		Extended Font:	Not Installed
Color:	9		
B/W:	487		
SOFTWARE STATUS			
Network Information		PCL Emulation	
NIC Firmware Version:	01.05.00	Font Source:	Internal Font
IPv4 Address:	192.168.1.57	Font Number:	0
Subnet Mask:	255.255.255.0	Font Style:	Courier
Default Gateway:	192.168.1.1	Pitch Size:	10.00
Device Name:	SCA65A51	Point Size:	12.00
Domain Name:	Sharp-Printer	Symbol Set:	PC-8
TCP/IP:	Enable		
DHCP:	Disable		
NetWare:	Disable		
EtherTalk:	Disable		
NBT/WINS:	Disable		
IPv6:	Disable		
IPsec:	Disable		

A report will print out will look similar to the example shown here. This report shows the model number, serial number and the meter readings for the black and white and color counts. Look the for the section that says "Total Count" I have this section highlighted and zoomed in below.

Congratulations! You have successfully printed out a meter read!

Total Count
Color: 9
B/W: 487