

How to find your Sharp copier's IP address



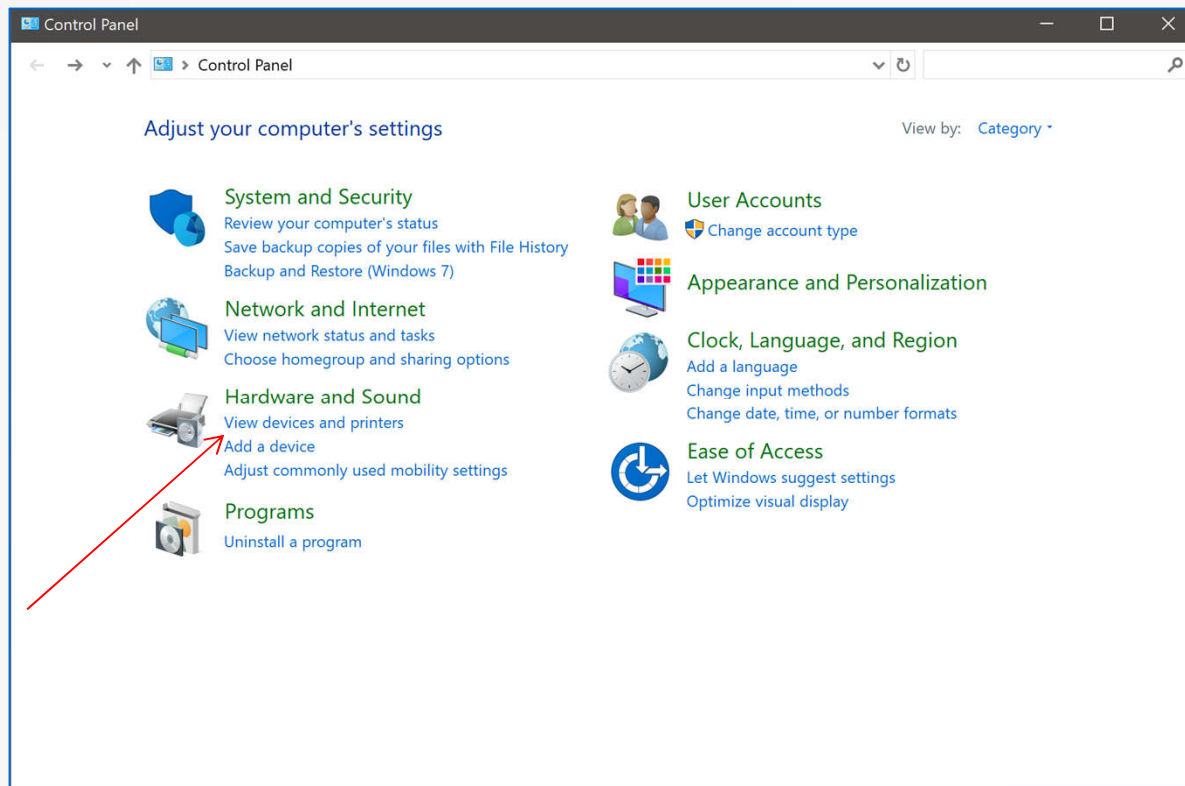
Solutions for document management.

There is 2 Easy ways to Find an IP Address for Sharps

- The First Way is through the Print Driver. Since the Driver is linked to the machine through a Port. The Driver List the IP
- The Second way is through the machine Operation Panel. This will print out a series of Pages that will show you the IP Address.

The First Step is finding the IP Address of the MFP

You can complete this by Opening “Devices and Printers” under the **Control panel** tab on your Computer



1. Under Devices and Printer **Choose** the Device you are Trying to Finds IP Address.

In this Example I am looking for the IP Information on a MX-C311.

Printers (12)



Fax



Foxit Reader PDF
Printer



Microsoft Print
to PDF



Microsoft XPS
Document Writer



NPI299701 (HP
Color LaserJet
MFP M476nw)



Send To
OneNote 2016



SHARP DX-C311
PCL6



SHARP DX-C311
PS



SHARP
MX-3550N PCL6



Sharpdesk
Composer



Xerox VersaLink
C405 PCL6



Xerox
WorkCentre
3615

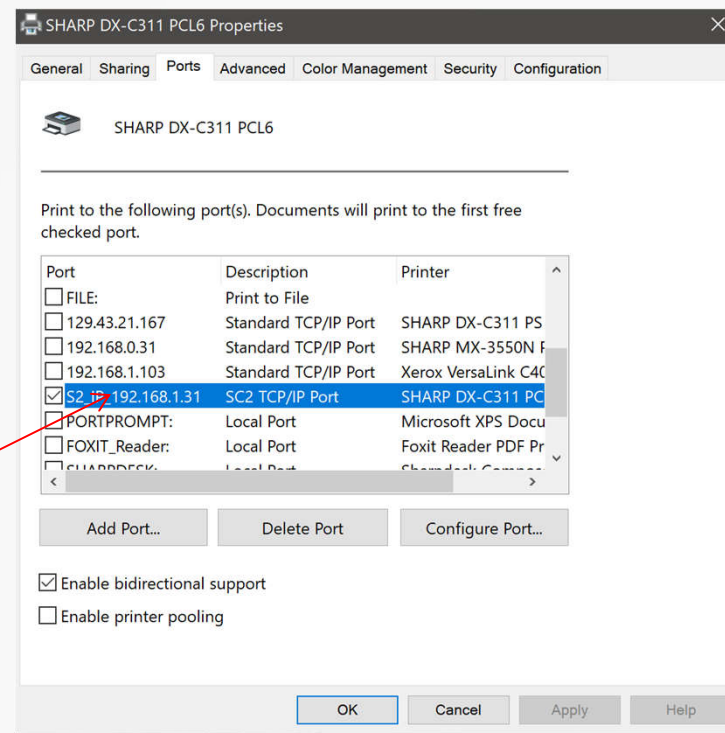
Unspecified (1)

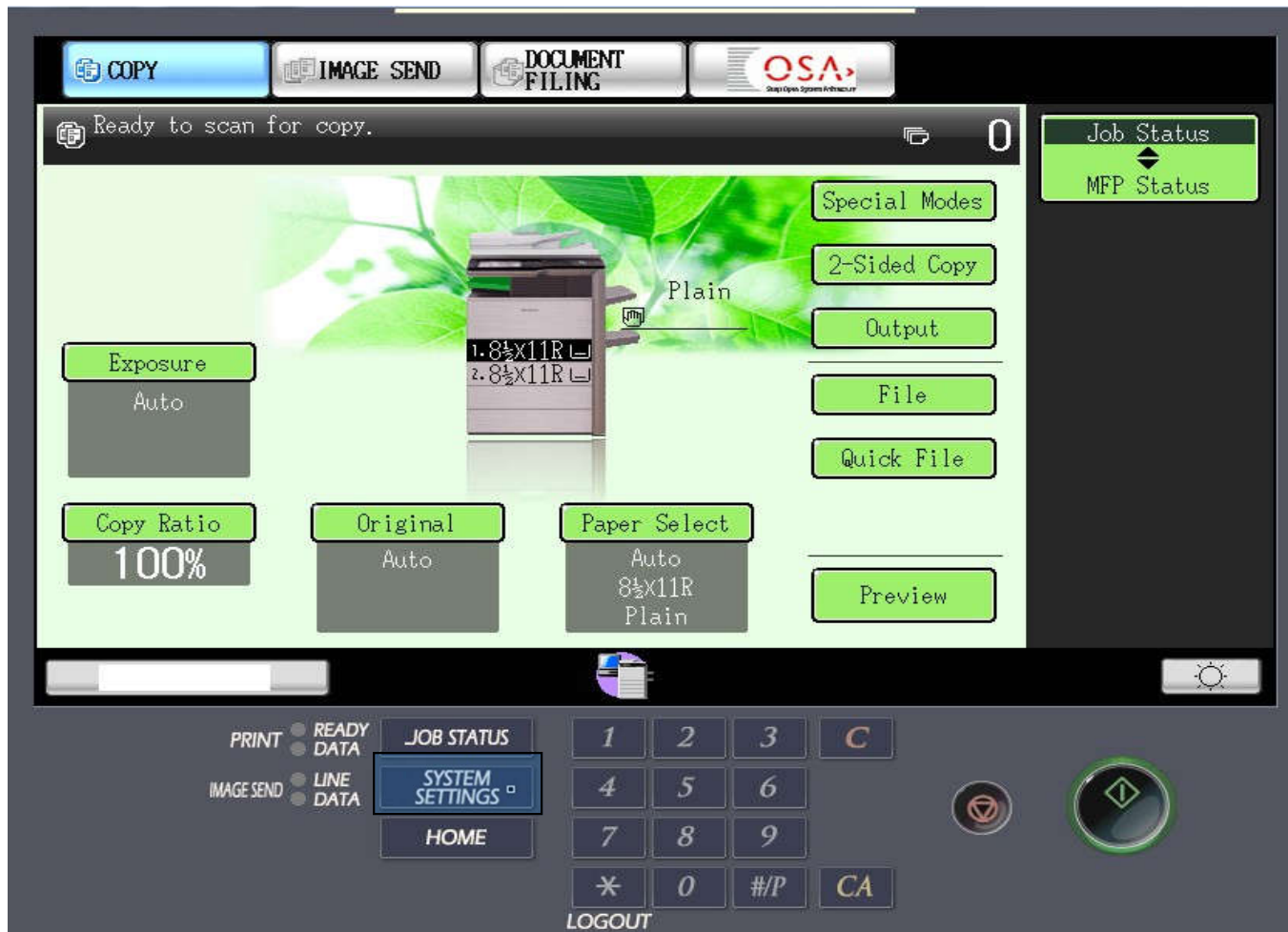
Right Click on the Chosen Printer and Choose “Printer Properties”

On the Top set of tabs you will see a Ports Tab

Under this tab you should see a highlighted/Check Box which is the Port the Machine is currently Connected Under

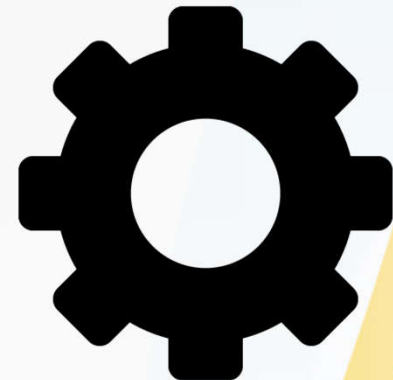
What you want out of this is the strand of Numbers on this machine it is **192.168.1.31**





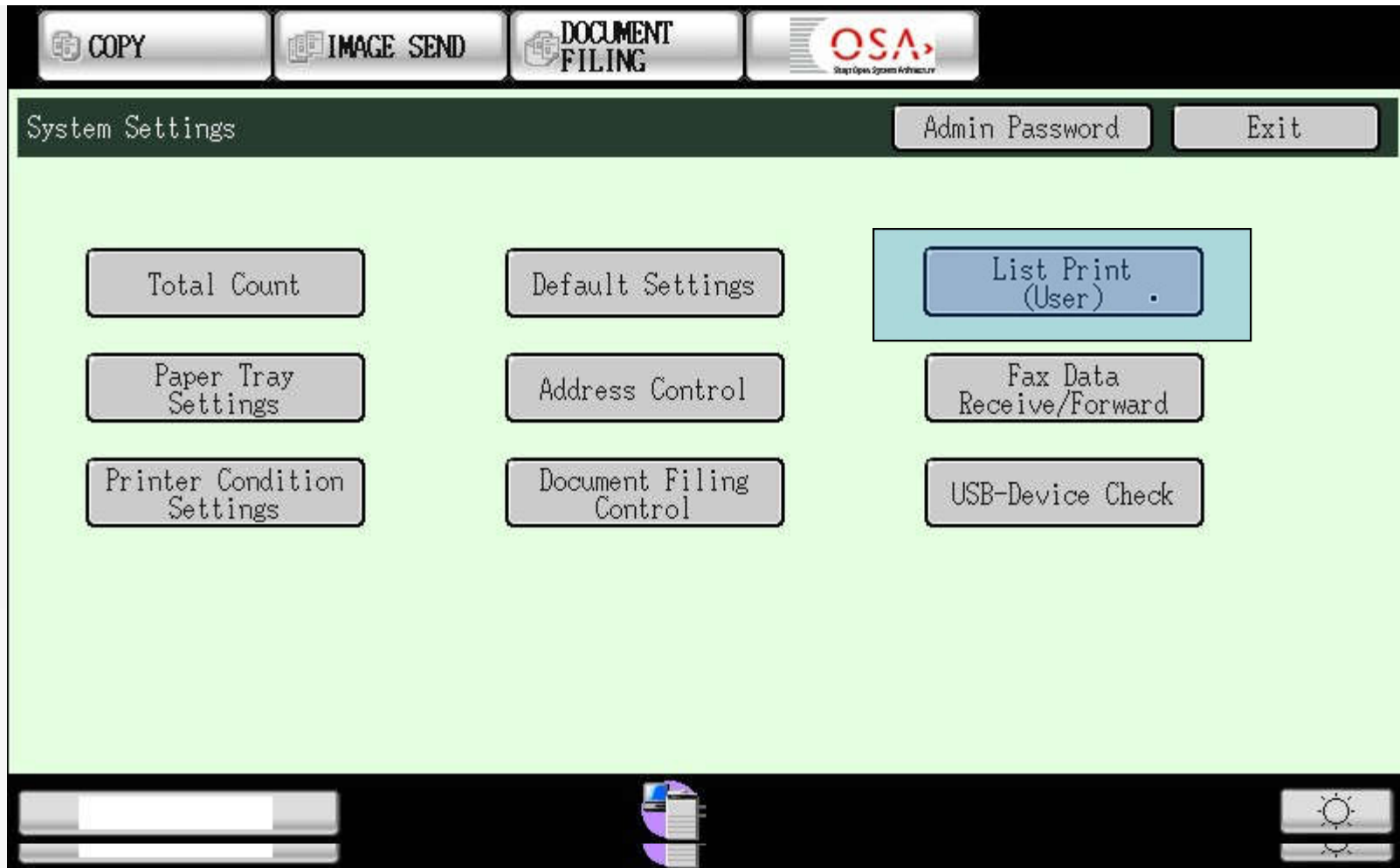
To find out the Copier's IP address

The machine can print out a report that has the IP address on it

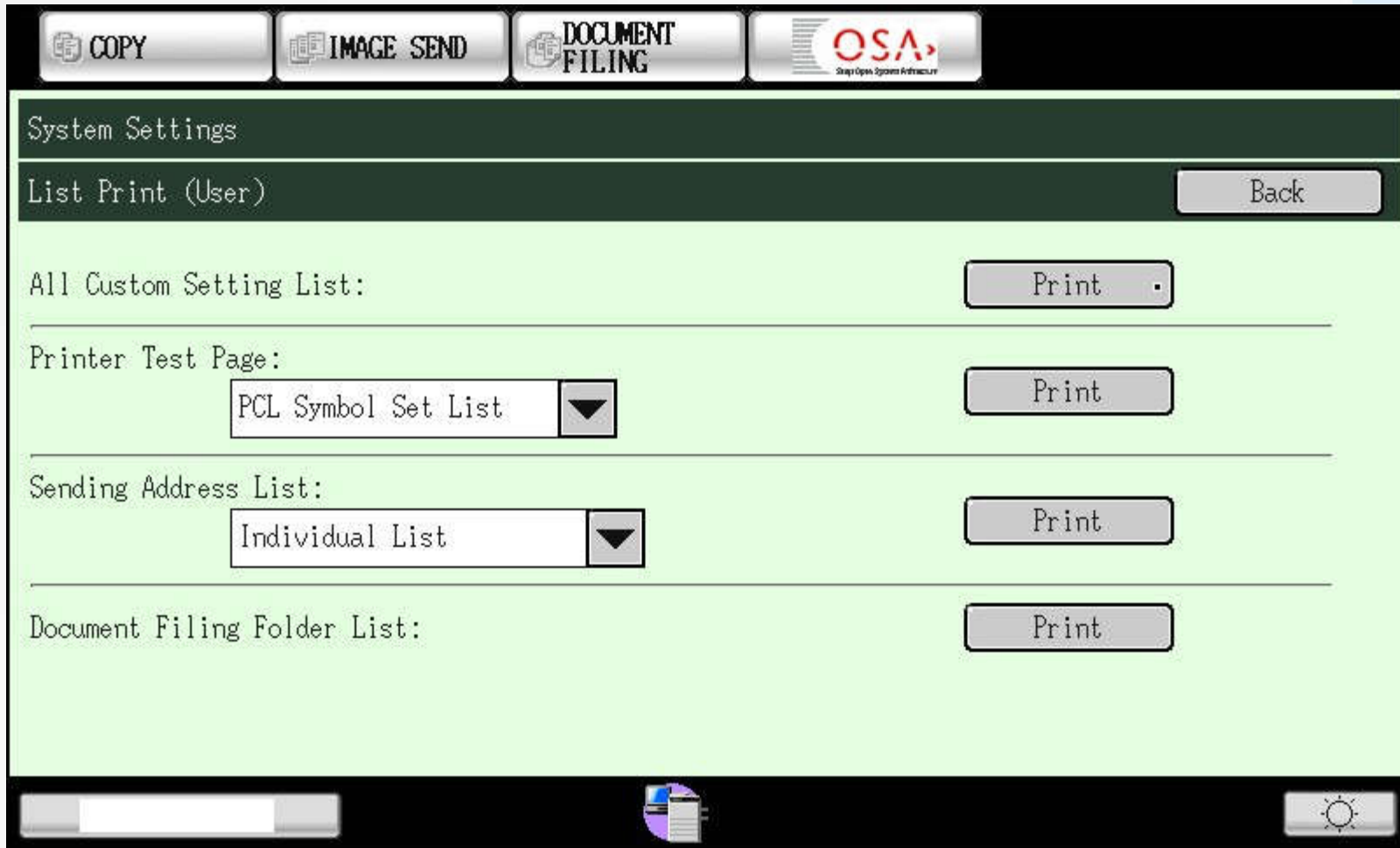


On the operation panel, push the “System Settings” button. On most copiers, it is a Physical button to the right on the touch screen. It can also look like a “gear” like shown above. In this example, my “System Settings” button highlighted above.

If your machine has the “i Pad” style touch screen. Push the “Settings” button. It should be one of the six buttons on the bottom area of the screen.



On the touch screen, push the button that says “List Print (User)”
I have that button highlighted in the example above.



Look for “All Custom Settings List” and push the print button that is next to it.

A report will print out.

SHARP

All Custom Setting List

MX-M363N

S/N:0501565200 (1/3)

HARDWARE STATUS			
Machine Information		Firmware Version	
Resolution:	600dpi	PCU:	01.07.j3
Language:	American English	MAIN:	0304.j3
Copier Memory		BOOT:	01.06.j3
Base Memory:	640MB	SCANNER:	02.01.j3
Optional Memory:	0MB	Installed Device	
Total Memory:	640MB	Paper Feeding Options:	Not Installed
Printer Memory		Paper Exit Options:	Finisher
Base Memory:	1024MB	Right Tray	Not Installed
Optional Memory:	0MB	Extended Font:	Not Installed
Total Memory:	1024MB		
HDD			
	305.2GB		
Total Count			
	299230		

SOFTWARE STATUS			
Network Information		PCL Emulation	
NIC Firmware Version:	01.05.00	Font Source:	Internal Font
IPv4 Address:	192.168.1.38	Font Number:	0
Subnet Mask:	255.255.255.0	Font:	Courier
Default Gateway:	192.168.1.1	Pitch Size:	10.00
Device Name:	SCD4799A	Point Size:	12.00
Domain Name:	Sharp-Printer	Symbol Set:	PC-8
TCP/IP:	Enable		
DHCP:	Disable		
NetWare:	Enable		
EtherTalk:	Enable		
NetBEUI:	Enable		
IPv6:	Disable		
IPsec:	Disable		

See your Safety Guide for more information.

Network Information

NIC Firmware Version: 01.05.00

IPv4 Address: 192.168.1.38

Subnet Mask: 255.255.255.0

Default Gateway: 192.168.1.1

The IP address may look similar to this
Four sets of numbers separated by three dots.
I have it highlighted in the example above

The first page of the report should have the IP address
It may look similar to the page shown above.

Congratulations!! You now know your copiers IP address!!