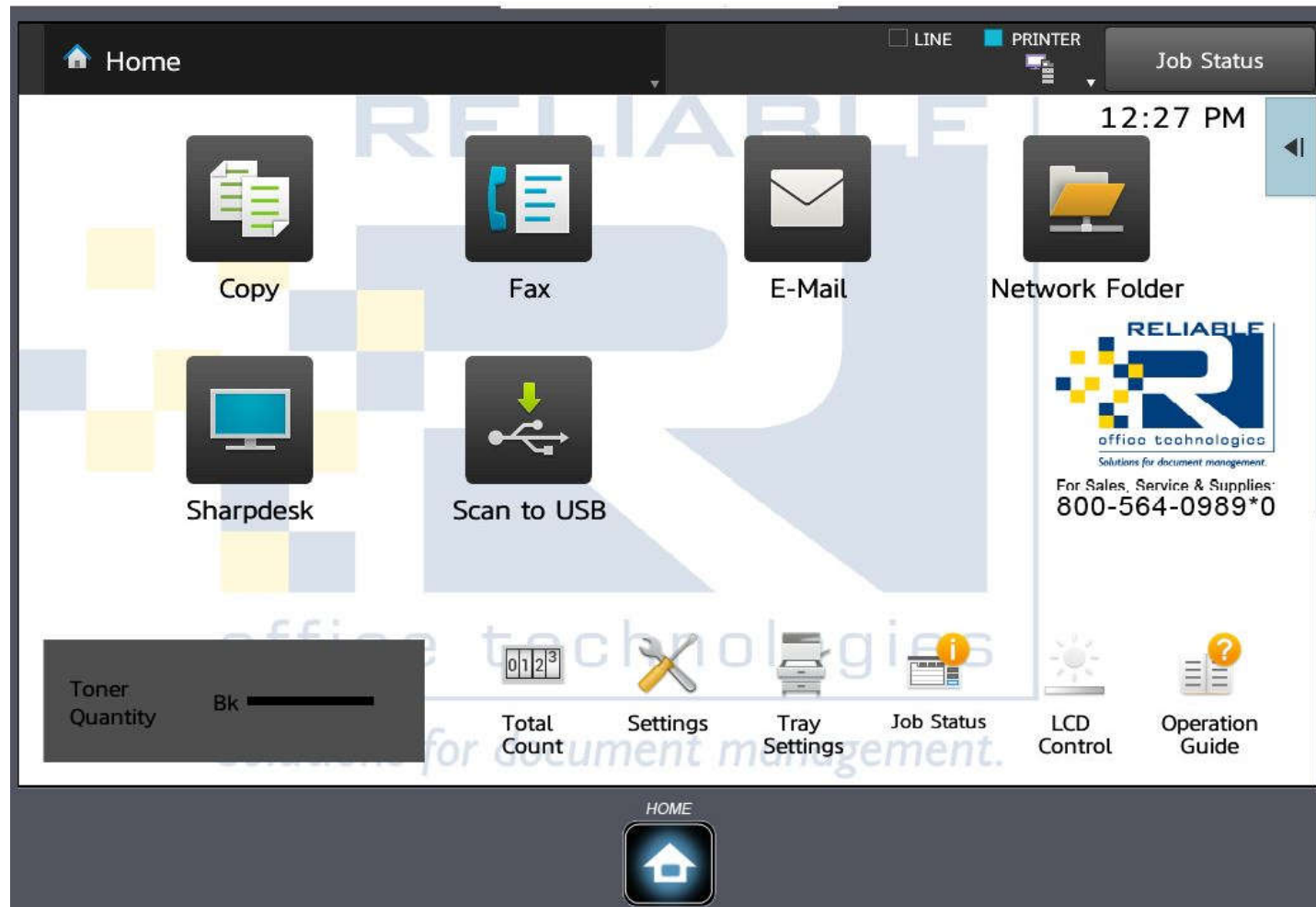


How to find your Sharp copier's IP address



To find out the Copier's IP address The machine can print out a report that has the IP address on it



On the operation panel, push the “Settings” button.

SHARP
MX-M6570

Operation Manual Download Sitemap

American English

Login

Status Address Book Document Operations User Control System Settings Shortcut

Machine Identification

Total Count

Device Status

Network Status

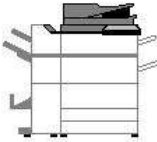
Firmware Version

Power Reset

Data List


List for User

List for Administrator



Unit Serial Number: 8500535500
 Name: MX-M6570
 Model Name: MX-M6570
 Machine Location: Not Set
 Current Status: Online
 Memo: Not Set

Supply Status

Supply Information	Status
Black Toner	Over 50% 

Paper Input Tray Status

Tray	Status	Paper Size	Paper Type
Tray 1	0%	Letter(8 1/2x11)	Plain Paper 1
Tray 2	9%	Letter(8 1/2x11)	Plain Paper 1
Tray 3	0%	Letter(8 1/2x11)	Plain Paper 1
Tray 4	0%	Executive B(7 1/4x10 1/2)	

On the touch screen, under “Data List” select “List for User”

SHARP
MX-M6570

Operation Manual Download Sitemap

日本語

Login

Status Address Book Document Operations User Control System Settings Shortcut

Machine Identification
Total Count
Device Status
Network Status
Firmware Version
Power Reset
Data List
List for User
List for Administrator

List for User

Machine Status List **Print(C)**

Printer Test Page

- PCL Symbol Set List
- PCL Internal Font List
- PS Font List
- NIC Page

Select All(S) **Clear Checked(K)**

Print(O)

Sending Address List

- Individual List
- Group List

Select All(R) **Clear Checked(L)**

Top of Page

In the “Printer Test Page” section, uncheck everything EXCEPT “NIC Page” Then Click on “Print”.

SHARP MX-C311 [S/N:9211375400] Version 01.05.00 [00:22:F3:12:8E:08]
Copyright (C) 2005- SHARP CORPORATION
Copyright (C) 2005- silex technology, Inc.

```
*** System status report ***  
[GENERAL]  
model name      SHARP MX-C311  
version         01.05.00  
printer name    SHARP MX-C311  
link status     1000BASE-T  
duplex mode     FULL  
Hardware addr   00:22:F3:12:8E:08  
Status print    NO
```

```
[TCP/IP]  
status          enabled  
DHCP/BOOTP     disabled  
IP address      192.168.1.31  
subnet mask    255.255.255.0  
gateway        192.168.1.1  
IPv6 status     disabled  
IPsec          disabled
```

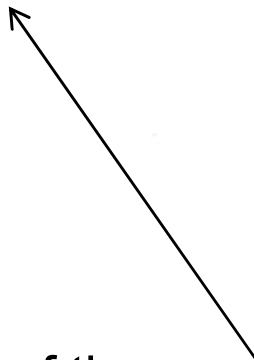
```
[NetWare]  
status          enabled  
packet type     802.2  
network number 00000000  
print mode     none  
NDS Tree  
NDS Context
```

```
[AppleTalk]  
status          enabled  
zone name       *  
type name       LaserWriter  
object name     SC128E08
```

```
[NetBIOS]  
status          enabled  
WINS/NBT status disabled  
computer name  SC128E08  
workgroup name Sharp-Printer  
master browser SC128E08
```

```
[TCP/IP]  
status          enabled  
DHCP/BOOTP     disabled  
IP address      192.168.1.31  
subnet mask    255.255.255.0  
gateway        192.168.1.1  
IPv6 status     disabled  
IPsec          disabled
```

The IP address may look similar to this
Four sets of numbers separated by three dots.
I have it highlighted in the example above



The first page of the report should have the IP address
It may look similar to the page shown above.

Congratulations!! You now know your copiers IP address!!